

系统优化升级

# QY50K

SYSTEMIC OPTIMATION & UPGADE

最大起重能力  
Max. Total Rated Lifting Load



50t

主臂最大起升高度  
Full-extend Boom Lifting Height



40m

副臂最大起升高度  
Full-extend Boom+Jib Lifting Height



55.8m



The Series of Construction Crane

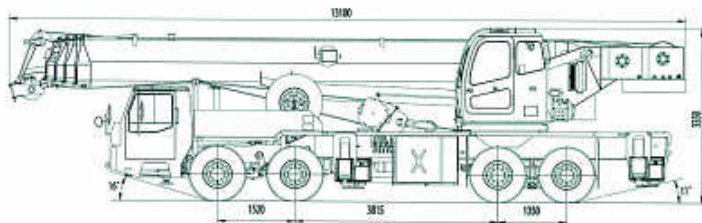
全路面起重机  汽车起重机  履带式起重机

All-Terrain Crane Series  Truck Crane Series  Crawler Crane Series

# QY50K 全液压汽车起重机

## 尺寸参数 Dimensions

整机全长 Overall length	mm	13100
整机全宽 Overall width	mm	2750
整机全高 Overall height	mm	3350



▲ 整机外形尺寸 Outline dimensions

## 重量参数 Weight

行驶状态整机质量 Dead weight in travel state	kg	38580
轴荷 Axle load		
前轴 Front Axle	kg	12950
后轴 Rear Axle	kg	25630

## 动力参数 Power

发动机型号 Engine model	Steyr WD615.67A	CumminsM-C200	WD615.46	ISLE+350
发动机额定功率 Engine rated output	KW/(r/min)	206/2200	216/2100	266/2200 258/2100
发动机额定扭矩 Engine rated torque	N.m/(r/min)	1100/1400	1200/1400	1460/1400 1550/1400
发动机额定转速 Max. travel speed	r/min	2200	2100	2200 2100

## 行驶参数 Travel

行驶速度 Travel speed					
最高行驶速度 Max. Travel speed	km/h	66	63	75	70
最低行驶速度 Min. travel speed	km/h	2.7	4.3	2.7	2.7
转弯直径 Turning diameter					
最小转弯直径 Min. turning diameter	m	24	24	24	24
臂头最小转弯直径 Min. turning diameter at boom tip	m	26.8	26.8	26.8	26.8
最小离地间隙 Min. ground clearance	mm	285	285	285	285
接近角 Approach angle	°	16	16	16	16
离去角 Departure angle	°	11	11	11	11
最大爬坡能力 Max. gradesability	%	27	27	46	48
百公里油耗 Fuel consumption of 100km	L	~42	~42	~42	~42

## 主要性能参数 Lifting performance

最大额定总起重量 Max. total rated lifting load	t	50
最小额定幅度 Min. rated working radius	m	3
转台尾部回转半径 Turning radius at swing table tail	mm	3482
最大起重力矩 Max. load moment		
基本臂 Base boom	kN.m	1764
最长主臂 Full-extend boom	kN.m	823.2
支腿距离 Outrigger extension distance		
纵向 Longitudinal	m	5.65
横向 Lateral	m	6.6
起升高度 Lifting height		
基本臂 Base boom	m	10.75
最长主臂 Full-extend boom	m	40
最长主臂 + 副臂 Full-extend boom+Jib	m	55.8
副臂安装角 Jib offset		0°、15°、30°

## 工作速度参数 Working speed

起重臂变幅时间 Boom elevating time		
全程起臂 Boom raising	s	88
起重臂伸缩时间 Boom telescoping time		
全程全伸 Full-extending	s	180
最大回转速度 Max. slewing speed	r/min	2
起升速度(单绳第四层) Hoisting speed (single rope 4th layer)		
主起升机构满载 Main winch with full load	m/min	85
主起升机构空载 Main winch with no load	m/min	110
副起升机构满载 Auxiliary winch with full load	m/min	85
副起升机构空载 Auxiliary winch with no load	m/min	110

五节“U”形伸缩式吊臂  
5-section "U" typed telescopic boom

流线型整体式复合材料壳体的驾驶室、操纵室  
streamlined and integrated driver's cab and operator's cab made of complex material



# QY50K FULL HYDRAULIC TRUCK CRANE

主臂起重性能表 Total rated lifting load for boom 表一 (Table 1)

工作幅度 working radius m	吊臂长度 Boom Length				
	基本臂 Base boom 10.70m	中长臂 Mid-extend boom 18.05m	中长臂 Mid-extend boom 25.40m	中长臂 Mid-extend boom 32.75m	全伸臂 Full-extend boom 40.10m
3	50000				
3.5	50000	31000			
4	42500	29000			
4.5	39500	28000	20000		
5	36000	27000	19000		
5.5	30300	24500	18500		
6	25600	23000	18200	13600	
7	19400	18900	17000	13600	
8	15200	14600	15500	12500	8200
9	12100	11800	12800	11500	8200
10		9500	10600	10500	7600
12		6800	7700	8200	6800
14		4800	5800	6200	6000
16		3400	4400	4800	5000
18			3300	3800	4000
20			2500	3000	3200
22			1800	2300	2600
24				1800	2100
26				1300	1600
28					1200
30					900
倍率 Parts of line	12	8	5	4	3
主臂最小仰角 Min. boom angle	16.36°	17.02°	24.11°	34.21°	39.28°
主臂最大仰角 Max. boom angle	68.95°	76.16°	77.93°	77.99°	77.30°
吊钩重量 Weight of hook block	515kg				

注: 对表一、表二中起重量的说明

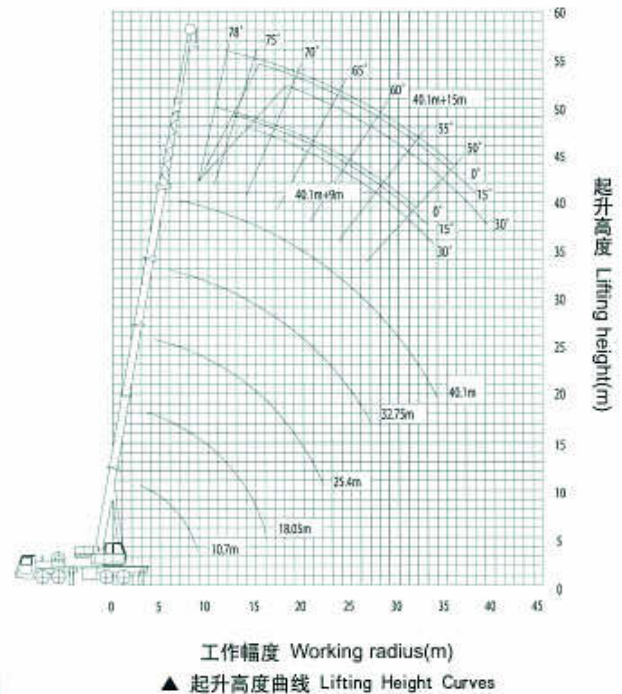
- ◆ 表中额定起重量所表示的数值, 是在平整的坚固地面上本起重机能够保证的最大起重量。
- ◆ 表中额定起重量包括吊钩和吊具的重量;
- ◆ 表中的工作幅度是包括吊臂的变形量在内的实际值;
- ◆ 允许达 7 级风时即风压为 125N/m<sup>2</sup> 起重机仍可作业。
- ◆ 表一起升高度均为参考值。

Notes on Table 1. and Table 2.

- ◆ The data in the table are the max. lifting capacity when the crane is set up on level and firm ground.
- ◆ The total rated lifting load in the table includes the weight of hook block and slings.
- ◆ The working radius in the table one is the actual value including boom deflection under loads.
- ◆ Wind pressure 125N/m<sup>2</sup>. Lifting operation is also allowed under the condition of wind force scale 7.
- ◆ The lifting height in table 1 is only for reference.

副臂起重性能表(侧后方) Total rated lifting load of jib(over side and rear)表二 (Table 2)

主臂 仰角 Boom angle (°)	主臂 Boom 40.1m					
	补偿角 Offset angle					
	0°		15°		30°	
	副臂 Jib 8.5m	副臂 Jib 15m	副臂 Jib 8.5m	副臂 Jib 15m	副臂 Jib 8.5m	副臂 Jib 15m
	起重量 Lifting Load(kg)	起重量 Lifting Load(kg)	起重量 Lifting Load(kg)	起重量 Lifting Load(kg)	起重量 Lifting Load(kg)	起重量 Lifting Load(kg)
78	4000	2000	2700	1400	2440	1100
75	3800	2000	2500	1200	2300	1000
72	3200	1800	2300	1150	2200	990
70	2900	1700	2200	1100	2100	950
65	2300	1400	1900	950	1900	880
60	1800	1200	1600	800	1500	830
55	1000	800	900	700	850	600
50	450		400		350	



注: 公司保留随技术改进而修改技术参数及部件的权利  
All specifications are subject to technical modifications without notice

## QY50K 全液压汽车起重机主要特点:

- ◆ 采用了多项专利和专有技术;
- ◆ 具有五节椭圆形伸缩主臂和二节折叠式副臂, 作业范围大;
- ◆ 全头驾驶室和新型操纵室, 操作舒适, 视野开阔;
- ◆ 回转机构具有自由滑转功能, 能自动找正重物, 采用偏心式回转小齿轮及外啮合方式, 啮合间隙易于调整;
- ◆ 新结构、进口高强度钢材的使用, 使整车重量大幅降低, 整车性能大幅提高, 主要性能行业领先;
- ◆ 电比例操纵系统使操作更精确、更轻松;
- ◆ 主要液压元件采用国际最先进技术, 整机可靠性大幅提高;
- ◆ 安全保护齐全、完善, 配有全自动力 limiter、高度限位器、钢丝绳过放装置等安全装置, 使作业更安全。
- ◆ 采用大功率环保型发动机, 动力强劲, 通过性好;

## QY50K FULL HYDRAULIC TRUCK CRANE:

- ◆ Adoption of several China state patents and technical know-how.
- ◆ 5-section telescopic boom of oviform profile and 2-section folding jib, larger working range.
- ◆ Full-width driver's cab and newly-designed operator's cab with wide field of vision, convenient for operation.
- ◆ Swing system with free-sliding function can automatically align to load. Pinion offset makes meshing clearance easy to adjust.
- ◆ New structure and imported steel material are used to minimize the total weight and maximize the whole vehicle performances. Main performances are in the leading position in the industry.
- ◆ Electro-hydraulic proportional control system implements all operations precisely and easily.
- ◆ Main hydraulic components used are international most advanced ones, the whole machine performance improved greatly.
- ◆ Well-equipped safety devices such as automatic load moment limiter, hoist limit switch, wire rope over-release cut-out device, make operation more safe.
- ◆ Environmental and powerful engine is equipped with the crane, strong drive and good passing-ability.



## 徐工集团徐州重型机械有限公司

地址: 中国江苏徐州市铜山路165号  
 Add: No.165 Tongshan Road Xuzhou Jiangsu China  
 电话(Tel): 0516-83462242 83462350  
 传真(Fax): 0516-83461669  
 邮编(Post Code): 221004  
 网址(URL): <http://www.xzxc.com.cn>  
 E-mail: [xzxyx@pub.xz.jsinfo.net](mailto:xzxyx@pub.xz.jsinfo.net)  
 服务电话(Service Tel): 0516-83461183  
 服务传真(Service Fax): 0516-83461180  
 质量监督电话 (Quality Inquiry Tel): 0516-87888268  
 备件电话(Spare Parts Tel): 0516-83461542  
 大修厂(Overhaul Factory): 0516-83461904



3C 强制性产品认证证书    职业健康安全管理体系认证证书    环境管理体系认证证书  
 国家一级企业证书    ISO9001 质量管理体系认证证书    ISO10012 计量体系认证证书