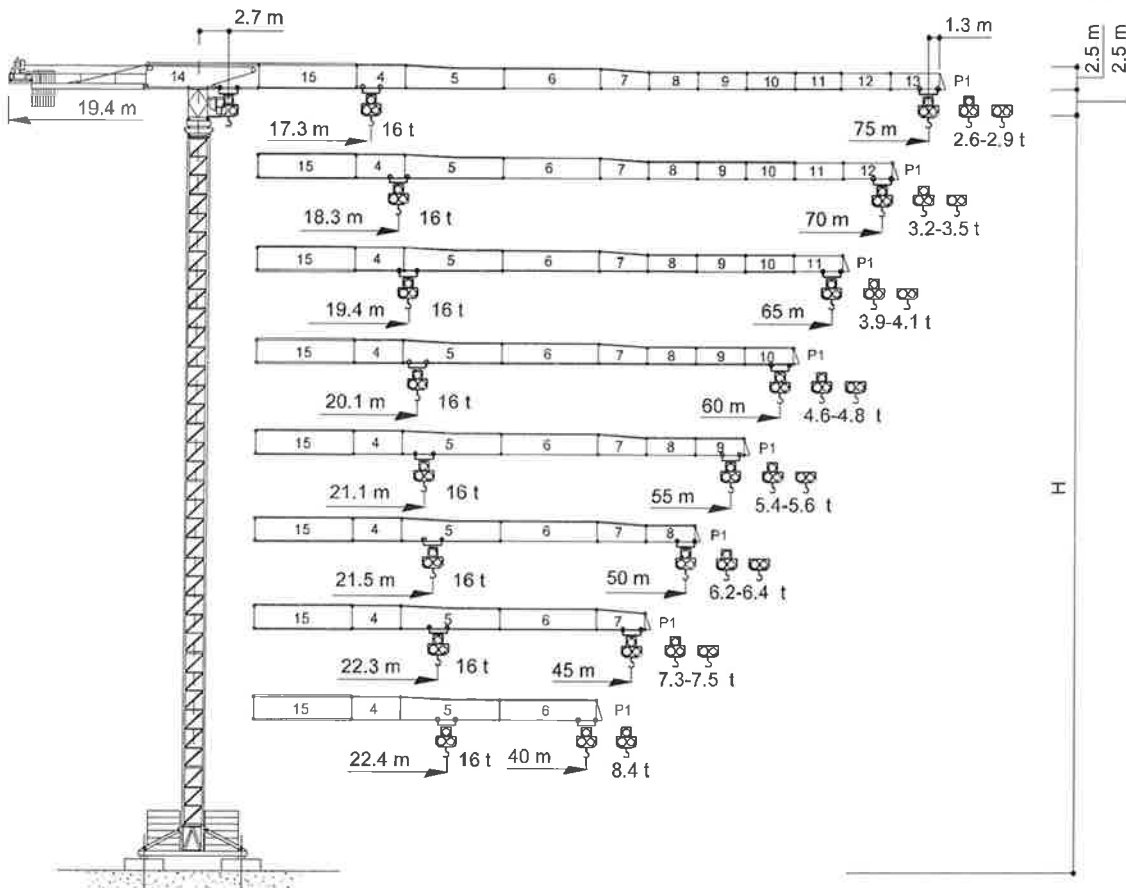




**Gru a torre "Flat Top"**  
**"Flat Top" Tower Crane • Grue à tour "Flat Top"**  
**"Flat Top" Turmdrehkran • Grúa torre "Flat Top"**



In vigore dal: 01 gennaio 2007. Le specifiche del prodotto ed i prezzi sono soggetti a modifica senza alcun obbligo di preavviso. Le fotografie e/o disegni nel presente documento hanno uno scopo meramente illustrativo. Per il corretto utilizzo di ciascuna attrezzatura, si rimanda allo specifico manuale d'istruzioni. L'inosservanza di quanto previsto nel manuale d'istruzione nell'utilizzo dell'attrezzatura, così come un comportamento irresponsabile potrebbero cagionare gravi lesioni o il decesso. Le nostre attrezzature sono coperte solo ed esclusivamente dalla garanzia *standard* scritta prevista per ogni specifico prodotto, con esclusione di qualsivoglia ulteriore garanzia, sia tacita che espressa, da parte di Terex. I prodotti e servizi elencati possono essere marchi di fabbrica, di servizi o ragioni sociali appartenenti a Terex Corporation e/o alle sue affiliate operative sia negli USA che in altri paesi e tutti i diritti s'intendono riservati. "TEREX" è un marchio appartenente a Terex Corporation e registrato sia negli USA che in altri paesi. Copyright © 2007 Terex Corporation.

Effective Date: January 01, 2007. Product specifications and prices are subject to change without notice or obligation. The photographs and/or drawings in this document are for illustrative purposes only. Refer to the appropriate Operator's Manual for instructions on the proper use of this equipment. Failure to follow the appropriate Operator's Manual when using our equipment or to otherwise act irresponsibly may result in serious injury or death. The only warranty applicable to our equipment is the standard written warranty applicable to the particular product and sale and Terex makes no other warranty, express or implied. Products and services listed may be trademarks, service marks or trade-names of Terex Corporation and/or its subsidiaries in the USA and other countries and all rights are reserved. "TEREX" is a registered trademark of Terex Corporation in the USA and many other countries. Copyright © 2007 Terex Corporation.

**CTT 331-16 H20**

**Diagramma di portata**  
**Load Diagram**

**I**  
**GB**

**Courbes de charges**  
**Lastkurven**

**F**  
**D**

**Curvas de cargas**

**E**

		<b>CTT 331-16</b>																		
		10	15	20	25	30	35	40	45	50	52	55	57	60	62	65	67	70	72	75
8 t	- 32.1 m	8	8	8	8	8	7.24	6.21	5.42	4.78	4.57	4.27	4.09	3.84	3.69	3.48	3.35	3.17	3.06	2.90
8 t	- 31.5 m	8	8	8	8	8	7.06	6	5.19	4.53	4.31	4.00	3.82	3.56	3.41	3.19	3.06	2.87	2.76	2.60
16 t	- 17.3 m	16	16	13.54	10.48	8.48	7.06	6	5.19	4.53	4.31	4.00	3.82	3.56	3.41	3.19	3.06	2.87	2.76	2.60
8 t	- 34.5 m	8	8	8	8	8	7.86	6.76	5.91	5.23	5.00	4.68	4.48	4.22	4.06	3.83	3.69	3.50		
8 t	- 33.6 m	8	8	8	8	8	7.61	6.50	5.64	4.95	4.71	4.39	4.20	3.93	3.76	3.54	3.40	3.20		
16 t	- 18.3 m	16	16	14.46	11.23	9.11	7.61	6.50	5.64	4.95	4.71	4.39	4.20	3.93	3.76	3.54	3.40	3.20		
8 t	- 36.3 m	8	8	8	8	8	8	7.17	6.28	5.57	5.32	4.99	4.78	4.51	4.34	4.10				
8 t	- 35.8 m	8	8	8	8	8	8	7.03	6.12	5.40	5.15	4.81	4.60	4.31	4.14	3.90				
16 t	- 19.4 m	16	16	15.44	12.03	9.79	8.21	7.03	6.12	5.40	5.15	4.81	4.60	4.31	4.14	3.90				
8 t	- 38.1 m	8	8	8	8	8	8	7.59	6.65	5.91	5.65	5.30	5.09	4.80						
8 t	- 37.4 m	8	8	8	8	8	8	7.41	6.47	5.72	5.46	5.11	4.89	4.60						
16 t	- 20.1 m	16	16	16	12.59	10.27	8.63	7.41	6.47	5.72	5.46	5.11	4.89	4.60						
8 t	- 40.0 m	8	8	8	8	8	8	7.02	6.24	5.97	5.60									
8 t	- 39.2 m	8	8	8	8	8	8	7.82	6.83	6.04	5.77	5.40								
16 t	- 21.1 m	16	16	16	13.24	10.81	9.10	7.82	6.83	6.04	5.77	5.40								
8 t	- 40.9 m	8	8	8	8	8	8	7.20	6.40											
8 t	- 40.1 m	8	8	8	8	8	8	7	6.20											
16 t	- 21.5 m	16	16	16	13.57	11.08	9.32	8.02	7	6.20										
8 t	- 42.5 m	8	8	8	8	8	8	8	7.50											
8 t	- 41.5 m	8	8	8	8	8	8	8	7.30											
16 t	- 22.3 m	16	16	16	14.10	11.53	9.70	8.35	7.30											
8 t	- 40.0 m	8	8	8	8	8	8	8												
8 t	- 40.0 m	8	8	8	8	8	8	8												
16 t	- 22.4 m	16	16	16	14.19	11.60	9.76	8.40												

**Altre installazioni**  
**Other configurations**

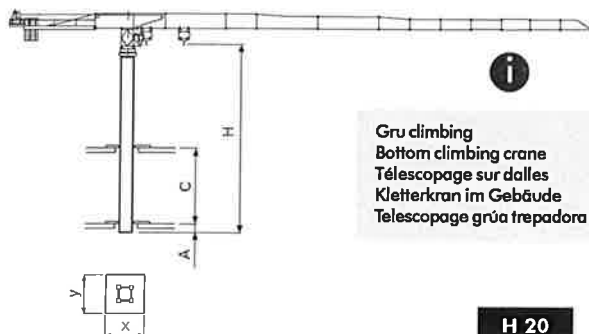
**I**  
**GB**

**Autres implantations**  
**Aufstellmöglichkeiten**

**F**  
**D**

**Otras implantaciones**

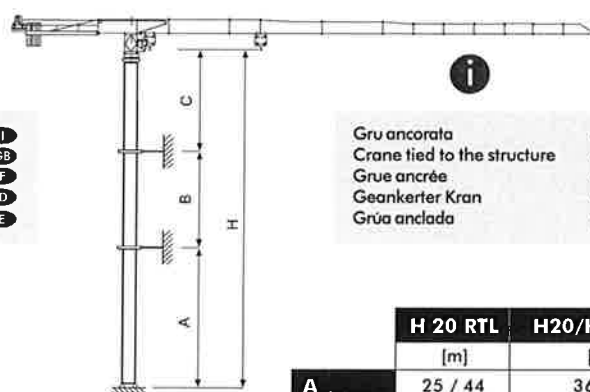
**E**



**Gru climbing**  
**Bottom climbing crane**  
**Télescopage sur dalles**  
**Kletterkran im Gebäude**  
**Telescopage grúa trepadora**

**I**  
**GB**  
**F**  
**D**  
**E**

	<b>H 20</b> [m]
<b>A<sub>min</sub></b>	1
<b>C<sub>min</sub></b>	10
<b>H<sub>max</sub></b>	30
<b>x</b>	2.6
<b>y</b>	2.08



**Gru ancorata**  
**Crane tied to the structure**  
**Grue ancrée**  
**Geankerter Kran**  
**Grúa anclada**

**I**  
**GB**  
**F**  
**D**  
**E**

	<b>H 20 RTL</b> [m]	<b>H20/HD23 R<sub>2</sub></b> [m]
<b>A<sub>min/max</sub></b>	25 / 44	36/54
<b>B<sub>min/max</sub></b>	15 / 22.5	15 / 22.5
<b>C<sub>max</sub></b>	27	27
<b>H<sub>max</sub></b>	<b>I</b>	

Torre  
Tower

I  
GB

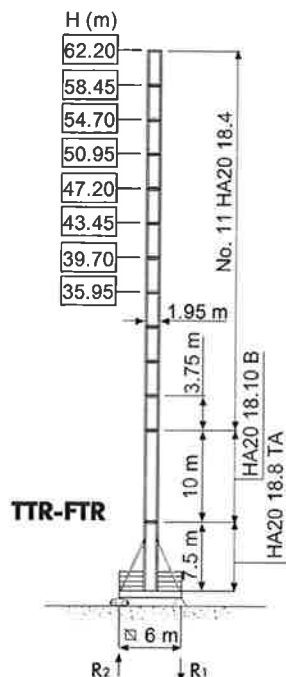
Tour  
Turm

F  
D

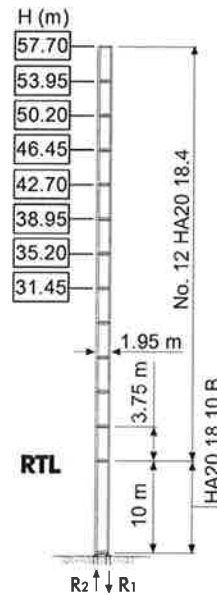
Torre

E

**H20**

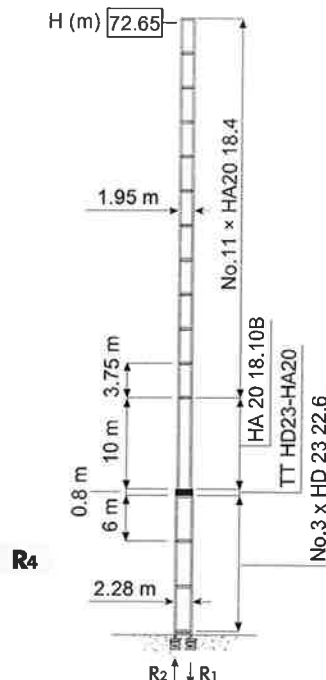


R1	1435 kN ●	1515 kN ◊
R2		150 kN ◊
	107 t	



R1	2640 kN ●	2670 kN ◊
R2	1990 kN ●	2060 kN ◊
	87 t	

**H20/HD23**



R1	3000 kN ●	3900 kN ◊
R2	2250 kN ●	3250 kN ◊
	101 t	

- H Altezza massima sotto gancio **I**
- In servizio
- ◊ Fuori servizio
- A vuoto, senza zavorra, braccio max., altezza max.
- H Max. under hook height **GB**
- In service
- ◊ Out of service
- Without load, without ballast, max. jib and max. height
- H Hauteur maxi. sous crochet **F**
- En service
- ◊ Hors service
- A vide, sans lest, avec flèche et hauteur maximum
- H Höchste Hackenhöhe **D**
- In Betrieb
- ◊ Außer Betrieb
- Ohne Last und Ballast, mit Maximalausleger und Maximalhöhe
- H Maxima altura bajo gancho **E**
- En servicio
- ◊ Fuera de servicio
- Sin carga, sin lastre, con pluma y altura máxima

Meccanismi **I** Mechanisms **GB** Mécanismes **F** Antriebe **D** Mecanismos **E**

	45 AFC 80 67 AFC 80	114 * kVA 138 * kVA	400 V - 50 Hz / 460 V - 60 Hz	2000/14/CE modificata
--	------------------------	------------------------	-------------------------------	-----------------------

\* Gru senza traslazione - Tre movimenti contemporanei al 90% / Crane without travelling equipment - Three movements simultaneous at 90% / Grue sans translation - Trois mouvements simultanés à 90% / Krane ohne Schienenfahren - Drei gleichzeitige Bewegungen mit 90% / Grúa sin traslación - Tres movimientos contemporaneos hechos al 90%

		m/min	t	kW		
	<b>45 AFC 80</b> <b>45 AFC 80 D2</b> <b>(VECTOR)</b>		0 ⇄ 30	8	45	560 m 850 m (D2)
			0 ⇄ 39	6		
			0 ⇄ 56	4		
			0 ⇄ 97	2		
			0 ⇄ 110	1.7		
			0 ⇄ 15	16		
			0 ⇄ 19.5	12		
			0 ⇄ 28	8		
			0 ⇄ 48.5	4		
			0 ⇄ 55	3.4		
	<b>67 AFC 80</b> <b>67 AFC 80 D1</b> <b>(VECTOR)</b>		0 ⇄ 41	8	67	560 m 850 m (D1)
			0 ⇄ 53	6		
			0 ⇄ 76	4		
			0 ⇄ 135	2		
			0 ⇄ 145	1.85		
			0 ⇄ 20.5	16		
			0 ⇄ 26.5	12		
			0 ⇄ 38	8		
			0 ⇄ 67.5	4		
			0 ⇄ 72.5	3.7		

	<b>DSR 3 70 D2</b>	12 ⇄ 36 ⇄ 72 m/min	70/50 Nm
	<b>DCC 5 112 D2</b>	0 ⇄ 95 m/min	11 kW
	<b>SSR 4 4 65</b>	0.73 r.p.m.	4 × 65 Nm
	<b>TSR 2RG 4M8</b>	12 ⇄ 24 m/min (50 Hz) 14 ⇄ 28 m/min (60 Hz)	4 × 80 Nm
		<b>i</b>	

	<b>I</b> Sollevamento	<b>GB</b> Hoisting	<b>F</b> Heben	<b>D</b> Elevación	<b>E</b>
	Traslazione carrello	Trolleying	Katzfahren	Distribución	
	Rotazione	Slewing	Schwenken	Orientación	
	Traslazione	Travelling	Schienenfahren	Traslación	
	Direttiva sul livello acustico	Directive on noise level	Richtlinie für den Schall-Leistungspegel	Directiva sobre el nivel acustico	
	Consultateci	Consult us	Auf Anfrage	Consultarnos	
	Potenza totale richiesta	Power requirements	Geforderte Stromstärke	Potencia necesaria	
	Alimentazione	Power supply	Stromversorgung	Alimentación	

## Gru Comedil s.r.l.

A Terex Company

Via delle Innovazioni 17, 33074 Fontanafredda (PN) - Italy  
Tel. (+39) 0434 989 111 - Telefax (+39) 0434 998 631

Internet e-mail: [info@comedil.com](mailto:info@comedil.com)  
Internet home page: [www.terexcranes.com](http://www.terexcranes.com)

**SISTEMA QUALITA' AZIENDALE**

certificato in accordo alla norma iso 9001:2000