

HT Excalibur

Tug Boat



GENERAL PARTICULARS

| | | |
|----------------------|---|------------------------|
| Flag | : | Singapore |
| Class | : | BUREAU VERITAS (BV) |
| Year Built | : | 2013 |
| Notation | : | BV-1 * Hull • Mach Tug |
| | | Coastal Area |
| Official No | : | 399333 |
| Call Sign | : | 9V2698 |
| Harbourcraft License | : | ST 1553F |

MACHINERY

| | | |
|---------------|---|---|
| Main Engine | : | 2 X VOLVO D13B-N MH Each 368 Kw @ 1800 Rpm |
| Generator | : | 2 X PERKIN 422 TGM Each 19 Kw @ 1500 Rpm |
| Gear Box | : | 2 X DONG I DMT 260 HL Ratio 4.52 : 1 |
| FPP Propeller | : | 2 X Dia 1360mm x 4 Blade Pitch 1279.76mm |
| Steering Gear | : | Palmarine Electro Hydraulic Type PEH1002-1P (Cap; 1 T) |
| Speed | : | 8 Knots approx |
| Towing Hook | : | SWL 15T c/w quick release |

PRINCIPAL DIMENSION

| | | |
|-----------------|---|---------|
| Length Moulded | : | 15.11 M |
| Breadth Moulded | : | 6.00 M |
| Depth Moulded | : | 3.00 M |
| Design Draft | : | 2.10 M |
| GRT / NRT | : | 66 / 19 |

DECK EQUIPMENT

| | | |
|--------------------|---|--|
| Anchor Windlass | : | 3/1.2 KW x 41 KN (Holding Load) Electric Windlass |
| Anchor (Stockless) | : | 125 Kg x 2 |
| Anchor Chain | : | 12.5 mm x 27.5M x 8 Lengths |
| Bollard Pull | : | 10 Tons approx |

TANK CAPACITY

| | | |
|-------------|---|-----------------|
| Fuel Oil | : | 21.50 MT approx |
| Fresh Water | : | 13.26 MT approx |
| Dirty Oil | : | 0.49 MT approx |
| Sewage | : | 1.04 MT approx |
| Grey Water | : | 1.01 MT approx |



TIONG WOON OFFSHORE PTE. LTD.

-A member of Tiong Woon Corporation Holding Ltd-

HT Excalibur

Tug Boat

TANK CAPACITY

| | | |
|-------------|---|-----------------|
| Fuel Oil | : | 21.50 MT approx |
| Fresh Water | : | 13.26 MT approx |
| Dirty Oil | : | 0.49 MT approx |
| Sewage | : | 1.04 MT approx |
| Grey Water | : | 1.01 MT approx |

NAVIGATION & COMMUNICATION EQUIPMENT

| | | |
|---------------------|---|---------------------------------|
| Radar | : | FURUNO 1715 (24NM) |
| MF/HF SSB Radio | : | ICOM IC-M710 transceiver |
| GPS | : | FURUNO GP-32 |
| Navtex | : | FURUNO NX-300 |
| Echo Sounder | : | FUSO NF56F (Color) |
| EPIRB | : | E5 McMurdo Smart find 406Hz |
| VHF | : | SIMARD RS-12 transceiver |
| VHF (Walkie-Talkie) | : | ICOM M73 x 2 |
| AIS | : | Class B, SIMARD A 150 |
| Magnetic Compass | : | SCT-130 (Table top) |
| | : | Sheng Si Zhou Navigation |
| PA System | : | TOA A-1121 Amplifier |
| Intercom System | : | Hanshin HCT 12-S Telephone type |

ACCOMODATION

3 Double bunks for 6 persons (Fully Air-condition)

LIFE SAVING APPARATUS

As per SOLAS requirement

Specifications are believed to be correct but not guaranteed. Updated on 12th September 2019

Page 2 of 3

Tiong Woon Offshore Pte. Ltd.

Co. Reg. No. 200304922M

No 15 Pandan Crescent, Singapore 128470

Tel: (65) 62617888 Fax: (65) 6777 4544

Tiong Woon Corporation Holding Ltd

(Group Head Office)

Co. Reg. No. 199705837C

No 15 Pandan Crescent, Singapore 128470

Tel: (65) 6261 7888 Fax: (65) 6777 4544

Crane & Transport Booking Hotline: (65) 6777 8882

Email: enquiry@tiongwoon.com

Webpage: www.tiongwoon.com



KATO HICOM
KATO HEAVY INDUSTRIES CONSTRUCTION MACHINERY CO.,LTD.



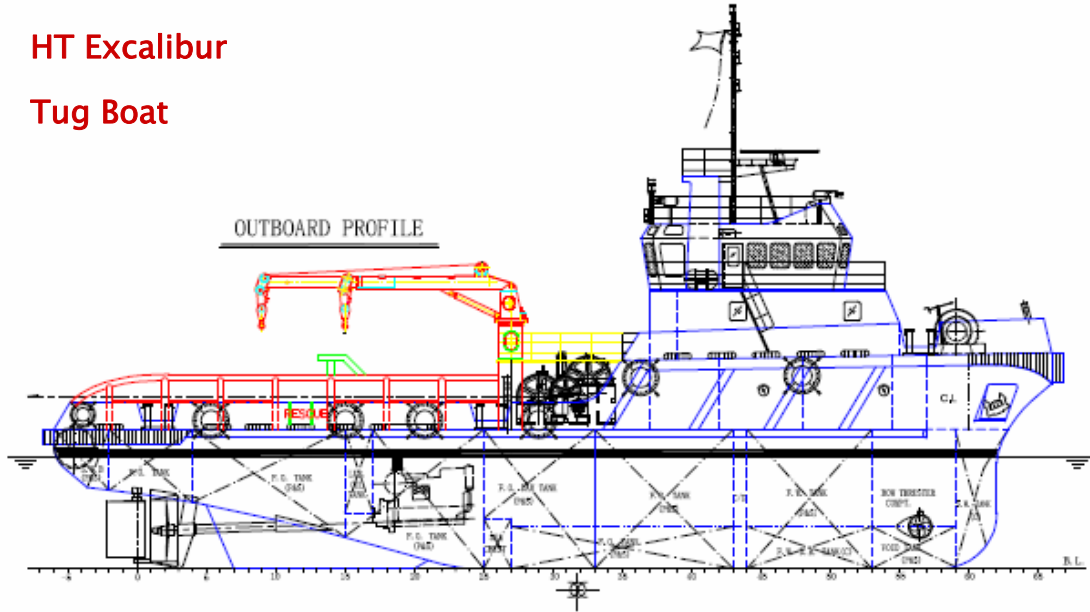


TIONG WOON OFFSHORE PTE. LTD.

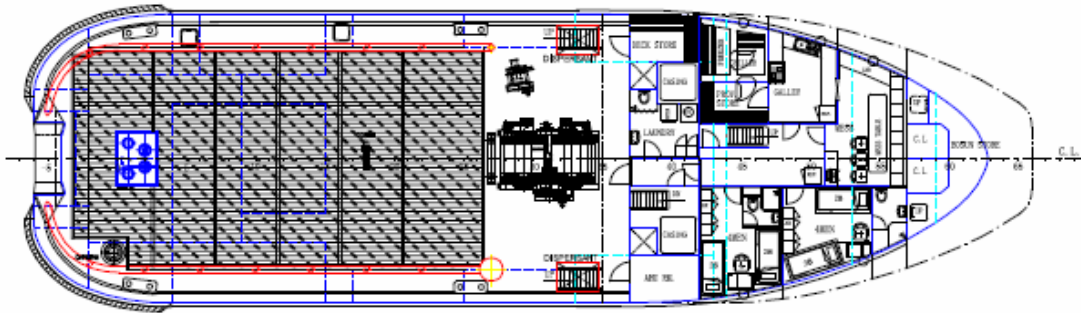
-A member of Tiong Woon Corporation Holding Ltd-

HT Excalibur

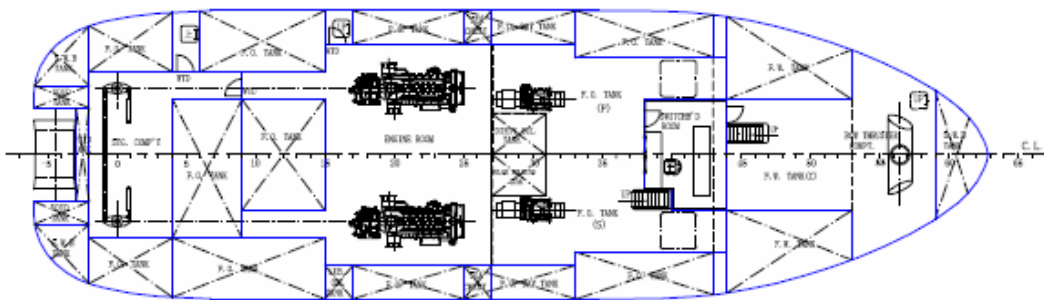
Tug Boat



MAIN DECK PLAN



BELOW MAIN DECK



Specifications are believed to be correct but not guaranteed. Updated on 12th September 2019

Page 3 of 3

Tiong Woon Offshore Pte. Ltd.
Co. Reg. No. 200304922M
No 15 Pandan Crescent, Singapore 128470
Tel: (65) 62617888 Fax: (65) 6777 4544

Tiong Woon Corporation Holding Ltd
(Group Head Office)
Co. Reg. No. 199705837C
No 15 Pandan Crescent, Singapore 128470
Tel: (65) 6261 7888 Fax: (65) 6777 4544
Crane & Transport Booking Hotline: (65) 6777 8882
Email: enquiry@tiongwoon.com
Webpage: www.tiongwoon.com

