



**GENERAL PARTICULARS**

Flag : Malaysia  
 Class : BV  
 Year Built : 2009  
 Notation : I  $\times$  Hull  $\times$  Mach Tug,  
 Special Service  
 Anchor Handling Vessel  
 Unrestricted Navigation

**PRINCIPAL DIMENSIONS**

Length Moulded : 36.00m  
 Breadth Moulded : 10.40m  
 Depth Moulded : 5.00m  
 Design Draft : 4.00m  
 GRT / NRT : 453 / 135

**MACHINERY**

Main Engine : 2 x Cummins KTA 50-M2  
 1600BHP @ 1800 rpm  
 Generator : 2 x Cummins 240KW 415V/3/50Hz  
 Gearbox : Reintjes Gearbox Ratio 5.95:1  
 Bow Thruster : 3 Tons, electric driven,  
 maker: ATB Sever  
 Steering Gear : Electro Hydraulic approx 3t.m x  
 35 deg x 2 Electro Hydraulic  
 Steering Gear  
 Propulsion System : 4 Blade Bronze, fixed pitch  
 propellers with fixed nozzles

**PERFORMANCE AND CONSUMPTION**

Bollard Pull : 40 Tons approx  
 Maximum Speed : 12 Knots approx  
 Economical Speed : 9.5 Knots approx  
 Fuel Consumption : 10.5 Tons/day approx  
 Deck Strength : 2.5 Tons/m<sup>2</sup>  
 Deck Space : 100m<sup>2</sup>

Specifications are believed to be correct but not guaranteed. Updated on 24<sup>th</sup> June 2013

Page 1 of 3

**Tiong Woon Marine Pte Ltd**

Co. Reg. No. 198301668R

No 15 Pandan Crescent, Singapore 128470

Tel: (65) 62617888 Fax: (65) 6777 4544

**Tiong Woon Corporation Holding Ltd**

(Group Head Office)

Co. Reg. No. 199705837C

No 15 Pandan Crescent, Singapore 128470

Tel: (65) 6261 7888 Fax: (65) 6777 4544

Equipment Booking Hotline: (65) 6777 4450

Email: enquiry@tiongwoon.com

Webpage: www.tiongwoon.com



## ASB MUTIARA 8

### 3,200BHP Anchor Handling Tug

#### DECK MACHINERY & EQUIPMENT

Anchor Windlass	:	1 x Electric-Hydraulic anchor windlass c/w double gypsy drum
Anchor	:	2 x 572kg stockless anchor
Anchor Chain	:	2 x Dia. 24mm studlink chains
Electro Tugger Winch	:	1 x 5T @ 15 m/min
Hyd Capstan	:	1 x 5T Electro Hyd. capstans with pulling force of 5 tons @ 15 m/min
Deck Crane	:	1 x Hyd. Crane @ 1.5 Ton S.W.L. @ 9 m radius
Towing Winch	:	1 x Hyd. double drum
Wire Size	:	Dia. 44 mm x 600 m length
Line Pull (1 <sup>st</sup> )	:	40 Tons
Brake Holding	:	80 Tons on 1 <sup>st</sup> layer for each drum
Tow Pin	:	1 x 200Ton
Shark Jaw	:	1 x 200Ton
Stern Roller	:	1 x 150MT S.W.L.

#### TANK CAPACITY

Fuel Capacity	:	299 Tons approx
Fresh Water Capacity	:	100 Tons approx
Lube Oil	:	3.0 Tons approx

#### ACCOMODATION

Berth	:	2 x 1 man cabin = 2 men
	:	1 x 2 men cabin = 2 men
	:	3 x 4 men cabin = <u>12 men</u>
Total		<u>16 men</u>
Sewage Plant	:	capacity 16 men

#### NAVIGATION & COMMUNICATION EQUIPMENT

Radar, Magnetic Compass, Echo Sounder, DGPS, Autopilot, GMDSS, MF/HF, VHF-DSC, Radar responder, EPIRB, Navtex Receiver, Inmarsat-C, SSB, SART, AIS

#### FIREFIGHTING EQUIPMENT

FIFI ½ System  
As per SOLAS requirement

#### LIFE SAVING APPARATUS

As per SOLAS requirement

Specifications are believed to be correct but not guaranteed. Updated on 24<sup>th</sup> June 2013

Page 2 of 3

#### Tiong Woon Marine Pte Ltd

Co. Reg. No. 198301668R

No 15 Pandan Crescent, Singapore 128470

Tel: (65) 62617888 Fax: (65) 6777 4544

#### Tiong Woon Corporation Holding Ltd

(Group Head Office)

Co. Reg. No. 199705837C

No 15 Pandan Crescent, Singapore 128470

Tel: (65) 6261 7888 Fax: (65) 6777 4544

Equipment Booking Hotline: (65) 6777 4450

Email: enquiry@tiongwoon.com

Webpage: www.tiongwoon.com

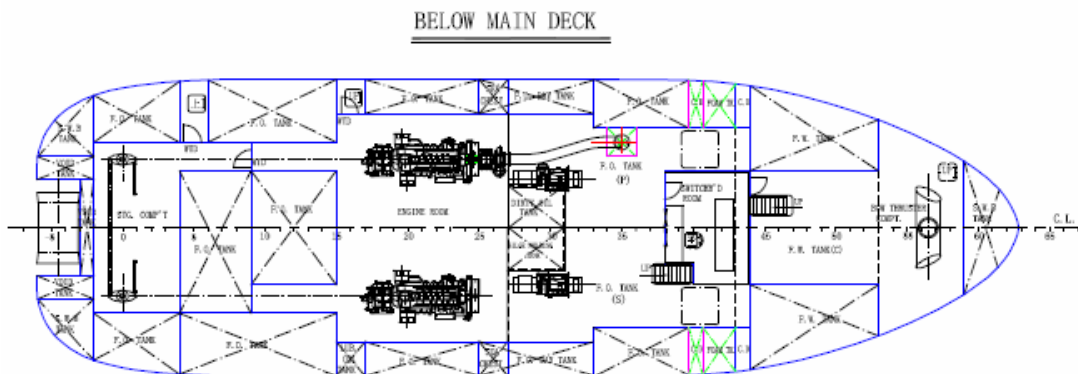
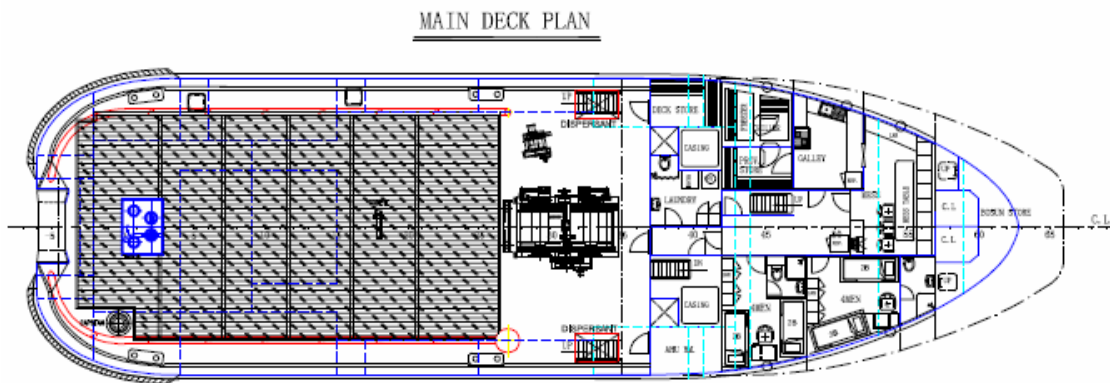
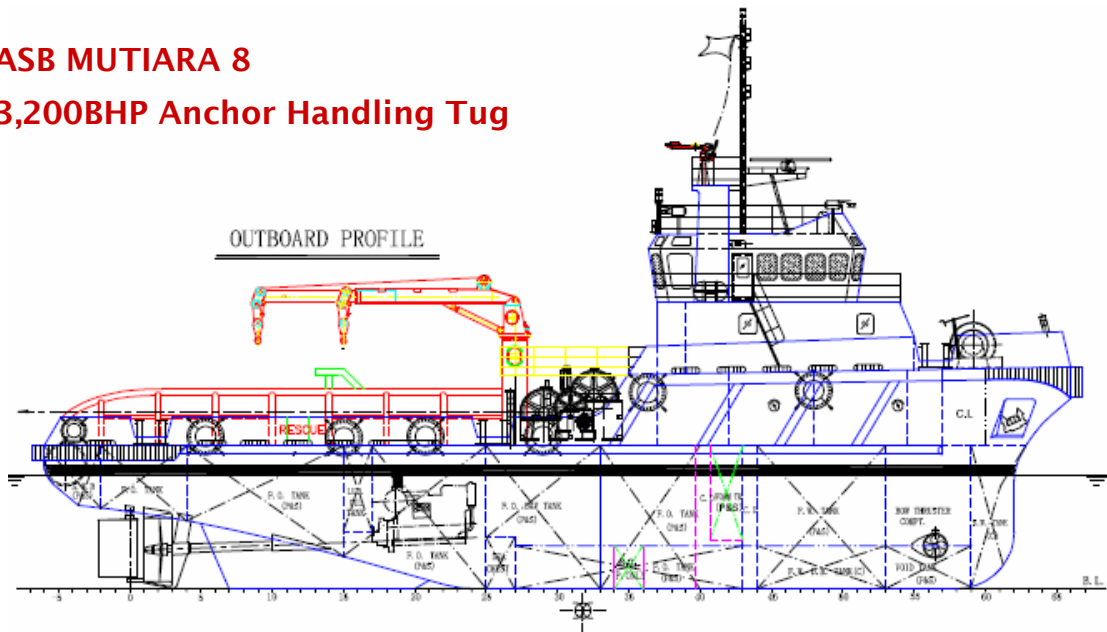




# TIONG WOON MARINE PTE LTD

-A member of Tiong Woon Corporation Holding Ltd-

## ASB MUTIARA 8 3,200BHP Anchor Handling Tug



Specifications are believed to be correct but not guaranteed. Updated on 24<sup>th</sup> June 2013

Page 3 of 3

**Tiong Woon Marine Pte Ltd**  
 Co. Reg. No. 198301668R  
 No 15 Pandan Crescent, Singapore 128470  
 Tel: (65) 62617888 Fax: (65) 6777 4544

**Tiong Woon Corporation Holding Ltd**  
 (Group Head Office)  
 Co. Reg. No. 199705837C  
 No 15 Pandan Crescent, Singapore 128470  
 Tel: (65) 6261 7888 Fax: (65) 6777 4544  
 Equipment Booking Hotline: (65) 6777 4450  
 Email: enquiry@tiongwoon.com  
 Webpage: www.tiongwoon.com

