



TIONG WOON MARINE PTE LTD

-A member of Tiong Woon Corporation Holding Ltd-

TWM 53-230

Flat Top Deck Cargo & Ballast Tank Barge



GENERAL PARTICULARS

Flag : Singapore
Class : ABS
Year Built : 2013

PRINCIPAL DIMENSIONS

Length Moulded : 230 ft (70.10m)
Breadth Moulded : 64 ft (19.50m)
Depth Moulded : 14 ft (4.27m)
Design Draft : 2.86m
GRT / NRT : 1,475 / 442
Deck Strength : 15 Tons/m²
Deadweight : Approx. 3,262.5 Tons
No. of Compartments : 21 Watertight Compartments
No. of Bulkheads : 2 Longitudinal & 7 Transverse

SCANTLING

Deck Plating : 16mm
Bottom Plating : 12mm
Side Shell Plating : 12mm

DECK EQUIPMENT

Anchor : 1 x 1,290kg stockless anchor
Anchor Winch : 1 set of 10 Tons capacity diesel-driven winch c/w one length of 25mm dia X 150m of steel wire rope

Towing Brackets : 2 Smit type towing pads at bow and aft of the barge

Navigation Light Stands : 3 units
Stanchions : 16 port / 16 starboard
Width between Stanchions : TBA

Specifications are believed to be correct but not guaranteed. Updated on 3rd January 2014

Page 1 of 2

Tiong Woon Marine Pte Ltd

Co. Reg. No. 198301668R

No 15 Pandan Crescent, Singapore 128470

Tel: (65) 62617888 Fax: (65) 6777 4544

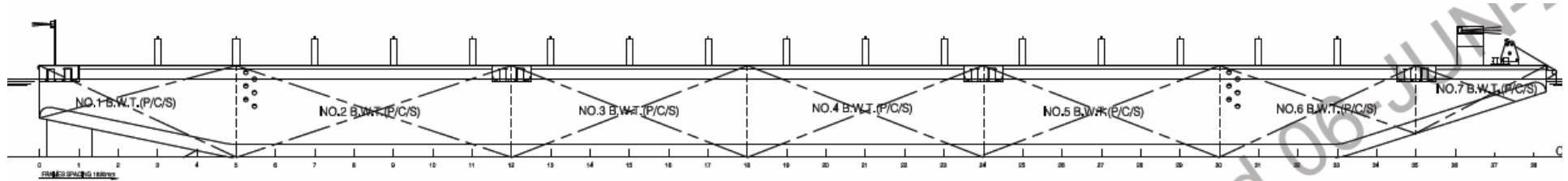


TIONG WOON MARINE PTE LTD

-A member of Tiong Woon Corporation Holding Ltd-

TWM 53-230

Flat Top Deck Cargo & Ballast Tank Barge



DECK VIEW

