



TIONG WOON MARINE PTE LTD

-A member of Tiong Woon Corporation Holding Ltd-

Tiong Woon 33 Flat Top Deck Cargo Barge



GENERAL PARTICULARS

Flag : Singapore
Class : GL
Year Built : 2006
Notation : ✕ 100 A5, Pontoon

DECK EQUIPMENT

Anchor : 1 x 340kg stockless anchor
Anchor Winch : 1 set of 10 Tons capacity
hand winch c/w one length
of 20mm diameter 240 ft
galvanized wire rope

PRINCIPAL DIMENSIONS

Length Moulded : 180 ft (52.67m)
Breadth Moulded : 56 ft (17.07m)
Depth Moulded : 12 ft (3.66m)
Design Draft : 2.94m
GRT / NRT : 829 / 249
Deck Strength : 10 Tons/m²
Deadweight : Approx. 1,900 Tons
No. of Compartments : 21 Watertight Compartments
No. of Bulkheads : 2 Longitudinal & 6 Transverse

Towing Brackets : 2 Smit type towing pads at
bow and aft of the barge

Navigation Light Stands : 3 units
Stanchions : 10 port / 10 starboard

SCANTLING

Deck Plating : 12.0mm
Side Shell Plating : 9.5mm
Bottom Plating : 9.5mm

Specifications are believed to be correct but not guaranteed. Updated on 6th February 2014

Page 1 of 2

Tiong Woon Marine Pte Ltd

Co. Reg. No. 198301668R

No 15 Pandan Crescent, Singapore 128470

Tel: (65) 62617888 Fax: (65) 6777 4544

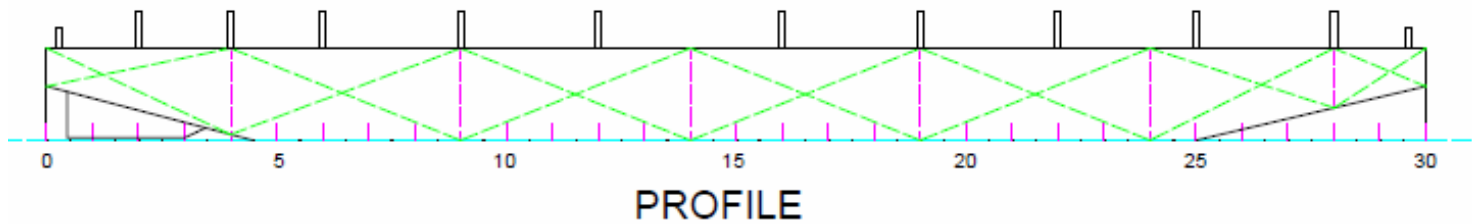


TIONG WOON MARINE PTE LTD

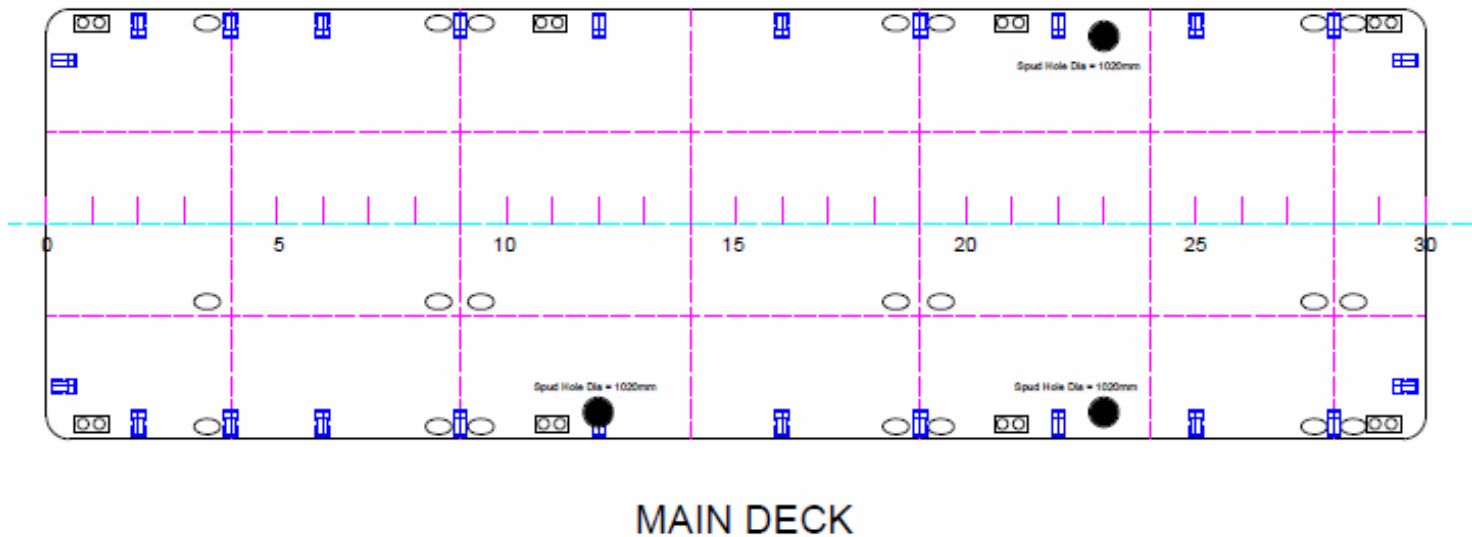
-A member of Tiong Woon Corporation Holding Ltd-

Tiong Woon 33

Flat Top Deck Cargo Barge



PARTICULARS	
LENGTH O.A	180'
BREADTH	58'
DEPTH	12'
DECK LOADING	10T/Sq.M



SPUD DETAILS:	
LENGTH	25m
DIAMETER	0.91m
WEIGHT	11Ton
HOLE DIA	100mm

STANCHION DETAILS:	
HEIGHT	1540mm
H-BEAM	250 x 250
TOTAL NOs	20pcs