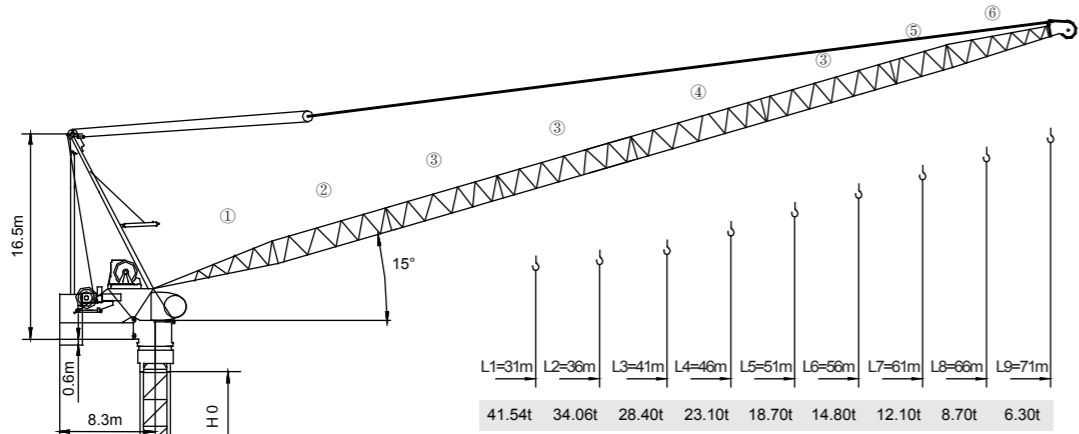


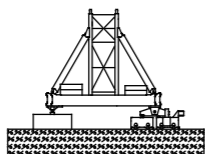
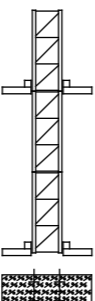
永茂建机  
YONGMAO

STL1400A  
50t



L1=31m	L2=36m	L3=41m	L4=46m	L5=51m	L6=56m	L7=61m	L8=66m	L9=71m
41.54t	34.06t	28.40t	23.10t	18.70t	14.80t	12.10t	8.70t	6.30t

臂架代號 Jib code	代號	長度 (m)	組合
① UJ7601A	L1	(31m)	①+②+⑤+⑥
② UJ7002A	L2	(36m)	①+②+④+⑥
③ UJ7003	L3	(41m)	①+②+④+⑤+⑥
④ UJ7004	L4	(46m)	①+②+③+④+⑥
⑤ UJ7505	L5	(51m)	①+②+③+④+⑤+⑥
⑥ UJ7106A	L6	(56m)	①+②+③+③+④+⑥
	L7	(61m)	①+②+③+③+④+⑤+⑥
	L8	(66m)	①+②+③+③+④+③+⑥
	L9	(71m)	①+②+③+③+④+③+⑤+⑥



CE FEM

Luffing

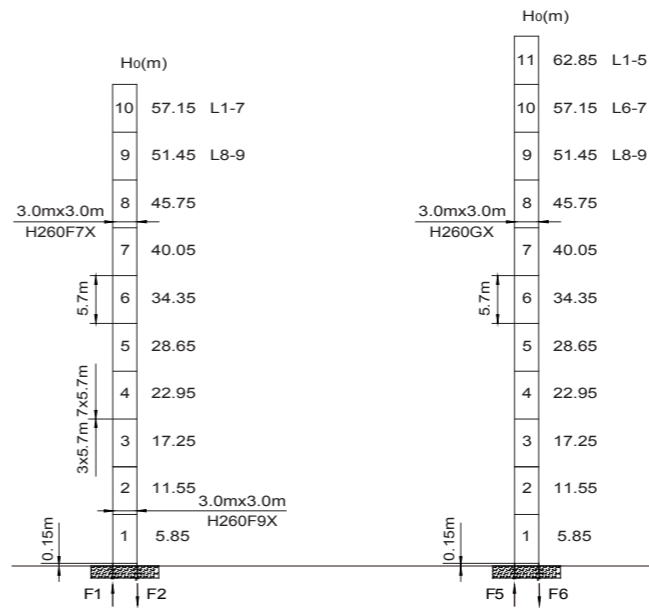
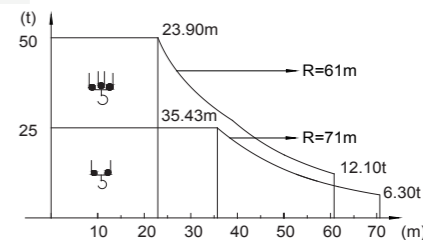
V 5.3-10092018

動臂系列

STL1400A  
50t

載荷表 Load Chart

R (m)	倍率 Fall	C <sub>max</sub> (t)	R(C <sub>max</sub> ) (m)	30	31	35	36	40	41	46	51	56	61	66	71
71	☺	25.00	7.93~35.43	25.00	25.00	25.00	24.41	20.73	19.93	16.42	13.60	11.29	9.35	7.71	6.30
66	☺	25.00	7.47~37.18	25.00	25.00	25.00	25.00	22.36	21.52	17.84	14.88	12.45	10.42	8.70	
	☹	37.50	7.47~27.85	33.93	32.44	27.32	26.22	22.36	21.52	17.84	14.88	12.45	10.42	8.70	
61	☺	25.00	7.03~39.92	25.00	25.00	25.00	25.00	24.92	24.01	20.06	16.89	14.28	12.10		
	☹	50.00	7.03~23.90	37.33	35.73	30.24	29.06	24.92	24.01	20.06	16.89	14.28	12.10		
56	☺	25.00	6.57~40.70	25.00	25.00	25.00	25.00	25.00	24.72	20.70	17.46	14.80			
	☹	50.00	6.57~24.37	38.30	36.67	31.07	29.87	25.65	24.72	20.70	17.46	14.80			
51	☺	25.00	6.14~42.39	25.00	25.00	25.00	25.00	25.00	25.00	22.07	18.70				
	☹	50.00	6.14~25.39	40.42	38.72	32.89	31.63	27.23	26.27	22.07	18.70				
46	☺	25.00	5.68~43.66	25.00	25.00	25.00	25.00	25.00	25.00	23.10					
	☹	50.00	5.68~26.15	42.00	40.25	34.24	32.94	28.42	27.42	23.10					
41	☺	25.00	5.24~41.00	25.00	25.00	25.00	25.00	25.00	25.00	25.00					
	☹	50.00	5.24~26.79	43.33	41.54	35.38	34.06	29.42	28.40						
36	☺	25.00	4.78~36.00	25.00	25.00	25.00	25.00								
	☹	50.00	4.78~26.79	43.33	41.54	35.38	34.06								
31	☺	25.00	4.34~31.00	25.00	25.00										
	☹	50.00	4.34~26.79	43.33	41.54										



	●	■
F5	615t	702t
F6	401t	520t
⊗	305t	

● 工作狀態支反力 In service reaction    ■ 非工作狀態支反力 Out of service reaction  
⊗ 整機自由高度重量 (不含平衡重及壓重重量) Total weight of free standing crane (excludes counter weight & ballast.)

Luffing STL1400A

1 1  
5 5  
3 4

Luffing STL1400A  
Luffing STL1400A

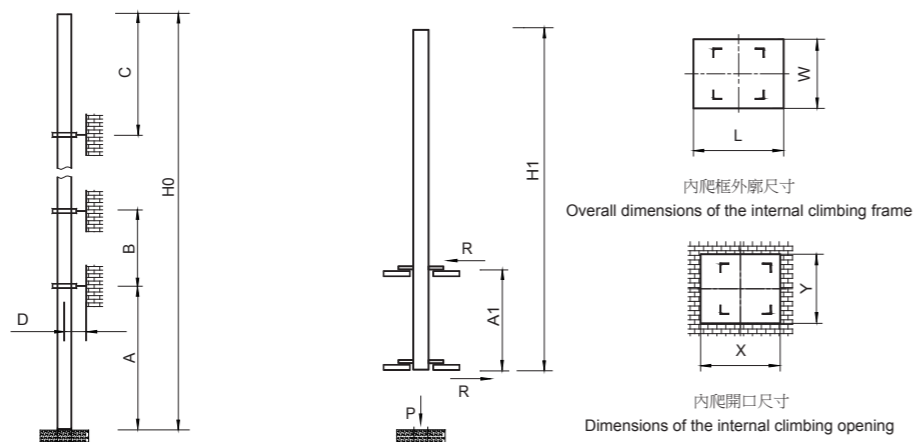


YONGMAO HOLDINGS LIMITED



YONGMAO HOLDINGS LIMITED

# STL1400A 50t

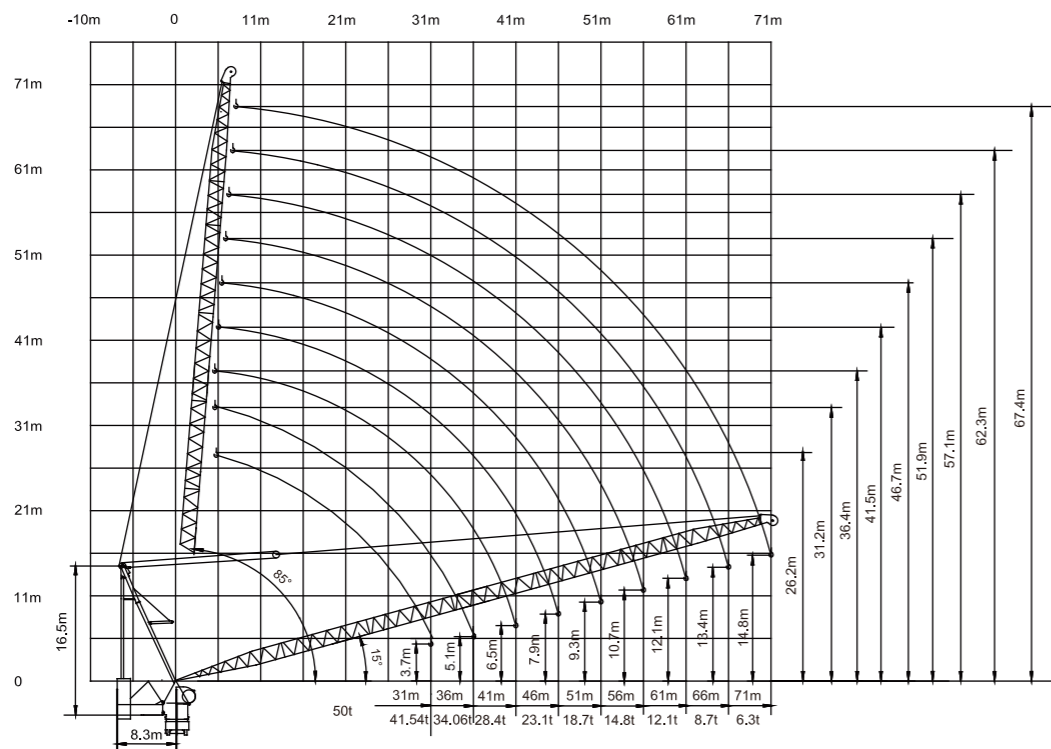


塔身節 Mast	臂長 Jib length	A (m)	B (m)	C (m)	D (m)	H <sub>0</sub> (m)
H260F7X	L1-9	37.2	22.8	31.35	>6	150 >150*
H260GX	L1-9	37.2	28.5	37.05	>6	150 >150*

塔身節 Mast	臂長 Jib length	H <sub>1</sub> (m)	A <sub>1</sub> (m)	P (t)	R (t)
H260F7X/ H260GX	*	*	*	*	*
		X (m)	Y (m)	L (m)	W (m)
		*	*	*	*

附著道數 Number of tie collars=(H<sub>0</sub>-A-C)/B+1

超過100m高度，需降低載荷，請與公司聯繫。 Load should be reduced when the height exceeds 100m. Please contact Yongmao for details.



# 動臂系列

# STL1400A 50t

主要性能參數 Specifications

機構 Mechanism	⤴		⤵		電纜 Cable	電動機 Motor kW
	m/min	t	m/min	t		
⬆	YM160LFV125BSA	0-32 0-38 0-64	25.0 20.0 8.0	0-16 0-19 0-32	50.0 40.0 16.0	600m 166
⤴	160DFV130DB	15°-85° 3min				166
⤵	15RFCV	0-0.4 rpm				2x15
⤴	RTV	0-15 m/min				4x7.5

電壓 Voltage	kVA
380V (± 10%) 50Hz	450

\* 與製造商聯繫 Contact us, please.

☆ 标准配置 Standard configuration.

1 5 5  
1 5 6

本技術參數不受法律約束，技術資訊請詳見相應說明書。  
These specifications and data are not legally binding. For any technical information, please refer to corresponding instructions.



YONGMAO HOLDINGS LIMITED

Luffing STL1400A  
Luffing STL1400A



YONGMAO HOLDINGS LIMITED